

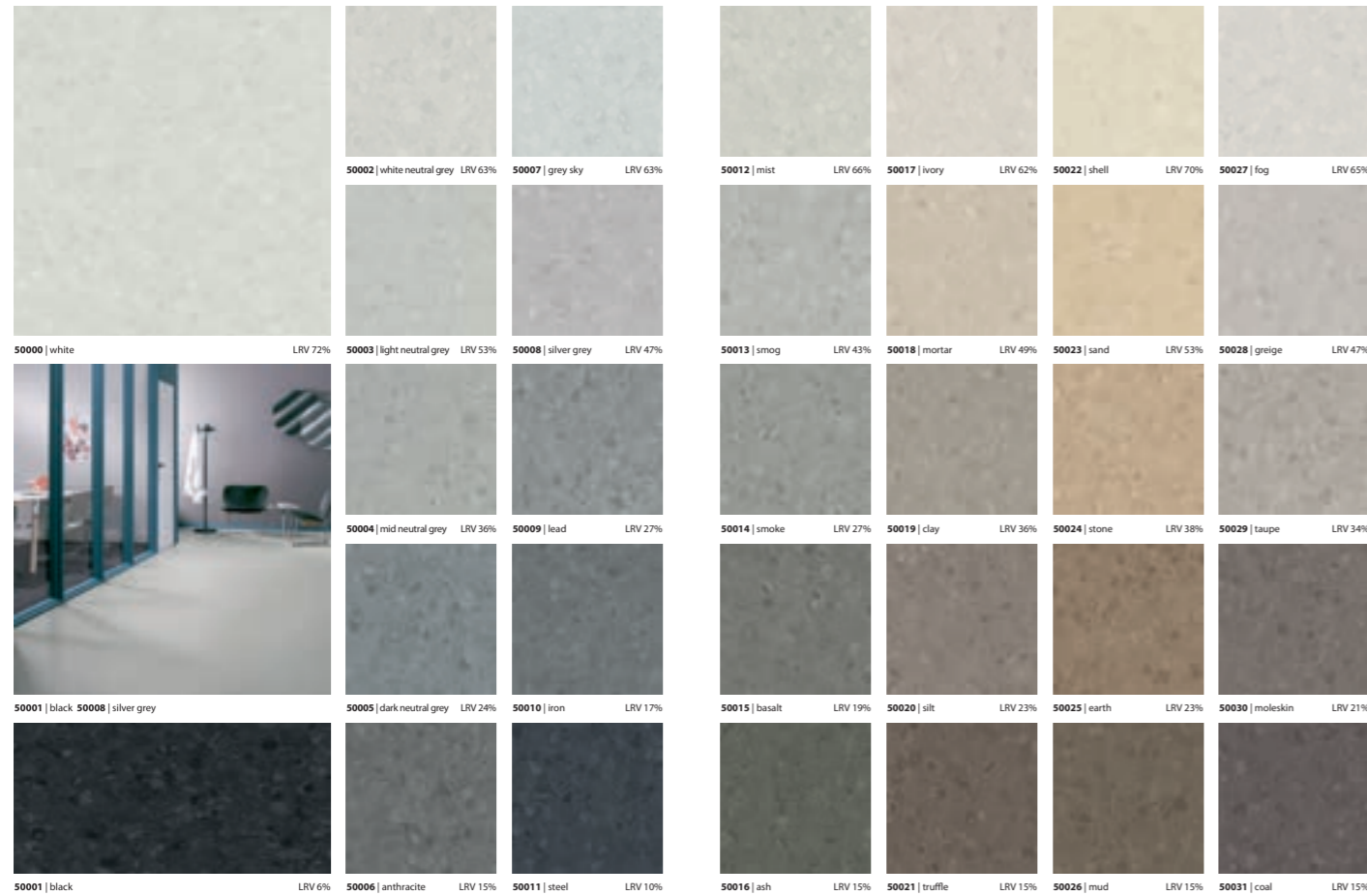
sphera[®] element

A NEW ERA OF PREMIUM HOMOGENEOUS VINYL FLOOR COVERING

Sphera Element adds character and style to floors across numerous applications. Whether in demanding, hygienic healthcare environments, in flexible, multi-purpose modern public buildings or in education facilities and offices where durability and colour are key.

50032 | soft lilac 50033 | dimgray 50037 | china blue

sphera[®] element



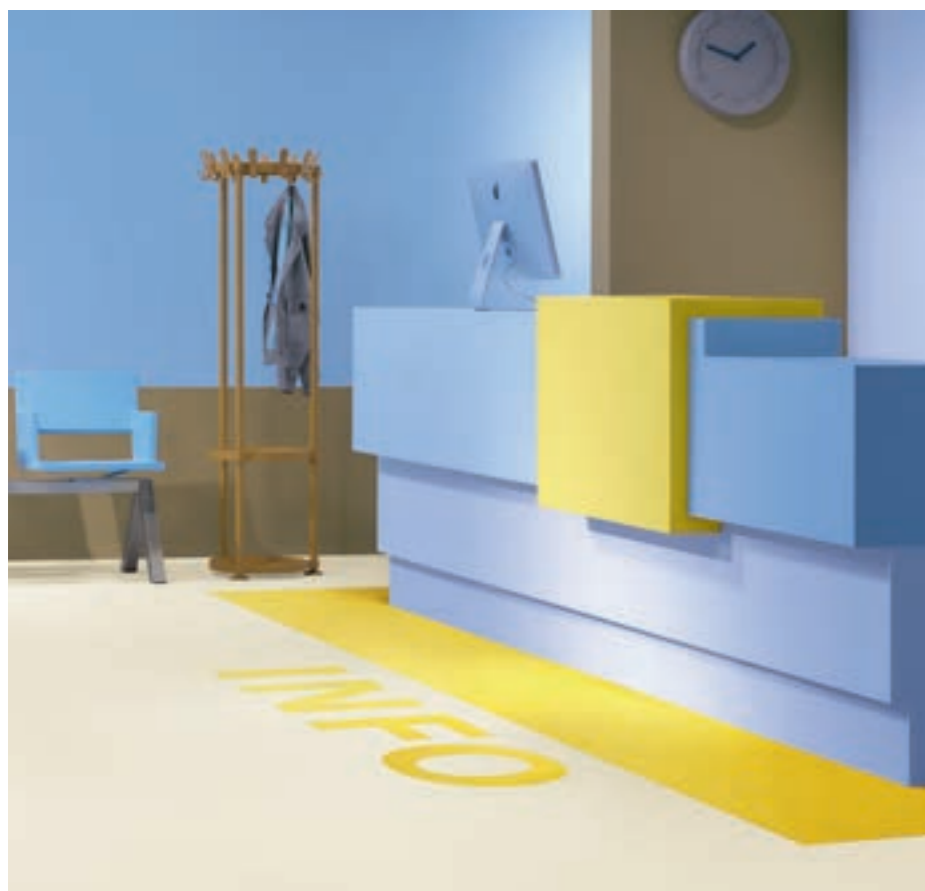
SPHERA ELEMENT; **THE WIDEST AND MOST COMPLETE COLOUR OFFER** IN THE HOMOGENEOUS MARKET.

Sphera Element offers a fresh, light and contemporary colour palette which adds a sophistication to floor design. The collection includes a wide range of warm and cool neutrals which complement interior finishes such as wood and stone along with pastels and bright accent colours for areas requiring applications or zoning.

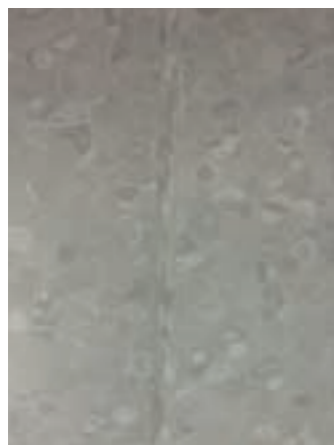
FORBO AQUAJET & WELDING

Beautiful as well as functional

Decorative flooring can be beautiful and functional at the same time. Think about routing on the floor in for example hospitals or museums, or zoning to identify different areas of a building.



With our Aquajet cutting technique we can create the most refined and detailed floor designs. The very precise water cutting technology offers a sophisticated detailing in the designs. Perfect to create your own identity on your floor; a logo, a piece of art, or even a portrait.



Let the floor stand out

Forbo Flooring offers over 300 welding rods to choose from. Heat welding provides a strong, watertight and hygienic seam. A subtle uni coloured match is available for every Sphera item. Use contrast colours as an accessible and effective way to create an authentic look.

A multi coloured solution is also available in Vinylweld. This tone-in-tone welding rod is blending into the visual of the floor, matching the three colour tones and following the movement of the visual.

Technical specifications

Sphera meets the requirements of EN-ISO 10581



COMMITTED
TO THE HEALTH
OF ONE
WWW.FORBO-FLOORING.COM/CHO

Binder content	EN-ISO 10581	type 1
Total thickness	EN-ISO 24346	2.0 mm
Surface finish		SMART-top
Collection size		Element 62 Energetic 52 Evolution 24
Commercial use	EN-ISO 10874	34 very heavy
Industrial use	EN-ISO 10874	43 heavy
Roll width	EN-ISO 24341	2 m
Roll length	EN-ISO 24341	≤ 27 m ~ 26 m
Total weight	EN-ISO 23997	2.9 kg/m ²
Dimensional stability	EN-ISO 23999	≤ 0.2 %
Residual indentation Typical value	EN-ISO 24343-1	≤ 0.10 mm - 0.03 mm
Abrasion resistance	EN 660-2	group T
Castor chair continuous use	ISO 4918 / EN 425	pass
Light fastness	ISO 105-B02	≥ 7
Flexibility	EN-ISO 24344	Ø 10 mm
Resistance to chemicals	EN-ISO 26987	very good
Slip resistance	DIN 51130	R9
Wetroom application	EN 13553	yes
Bacteria resistance	EN 846	Does not support growth
TVOC after 28 days	ISO 16000-6	≤ 10 µg/m ³

Sphera evolution meets the requirements of EN 14041

Reaction to fire	EN 13501-1	B _n -s1
Slip resistance	EN 13893	DS - µ ≥ 0.30
Body voltage	EN 1815	≤ 2 kV
Thermal conductivity	EN 12524	0.25 W/m-K

All Forbo Flooring Systems' sales organisations worldwide have a certified Quality Management System in accordance with ISO 9001.
All Forbo Flooring Systems' manufacturing operations have a certified Environmental Management System in accordance with ISO 14001.
The Life Cycle Assessment (LCA) of Forbo Flooring Systems' products is documented in individual Environmental Product Declarations (EPD's) which can be found on all of our websites.



EN 14041
CE
0200301-DoP-605

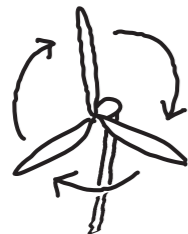
SPHERA, COMMITTED TO THE HEALTH OF ONE



With our portfolio covering we have the ambition to make a positive contribution to the quality of the indoor environment. We do this by offering environmentally responsible products and by paying special attention to safety, hygiene and well being.

Forbo Sphera has very low emissions of $<10\mu\text{g}/\text{m}^2$ after 28 days, is phthalate free and also offers colourways with high Light Reflectance Values ensuring that it can contribute to a healthy indoor environment. Its SMART-top surface treatment resists stains and is easy to clean ensuring safe and hygienic floors.


PRODUCED USING 100% GREEN ELECTRICITY FROM RENEWABLE RESOURCES




Our Sphera production site is part of an effective environmental management system and has achieved ISO14001 certification. All of the electricity we buy, comes from 100% renewable resources. Meeting present demands without compromising future needs.


Reducing, instead of reusing or recycling. Saves energy.

FORBO'S HOMOGENEOUS FLOORING TECHNOLOGY

 Uniquely embossed surface for optimal performance
Easy to clean and maintain.

 **SMART top**
Chemical resistance
SMART-top PUR surface finish ensures Sphera has a high resistance to chemicals, scratches and stains.
Contributing to a longer lifetime and cost reduction.

 High LRV values and bright, saturated hues
Studies show that a light indoor environment has a positive effect on the well being of the people.

 Low emitting and 100% phthalate free
Phthalate free > contributes to a healthy indoor environment.

 Produced in a zero waste environment
Zero landfill is achieved by the Sphera manufacturing plant